

GEOLICA
Product

COLOR CONTACT LENSES are a great way to change your look. Accessorize your outfit with color contacts and create the full impact of any look!



LADY

GEOLICA LADY generates an impressive look with attractive colors. Naturally change your eye color and give a good impression to anyone.



CELINE

GEOLICA CELINE creates a truly elegant and luxurious color on your eyes. Simply upgrade your style by simply wearing high quality color lenses.



CIRCLE

GEOLICA CIRCLE gives an effect of enlarging pupils. This will give your natural color more definition and makes your eyes look larger.

Design GEOLICA brand color contact lenses not only provide you with a wide range of selection but also beneficial to correct visual acuity at the same time.

GEOLICA LADY



GEOLICA CELINE



GEOLICA CIRCLE



Product Specifications

Product	Packaging	Material	Water Content	DIA	B.C	C.T	Power
GEOLICA LADY	2 Lenses Per Box	Polymacon	42%	14,2mm	8,6mm	0,07mm(-3,00)	Plano~-5,00D(-0,25step) -5,00~-10,0D(-0,50Step)
GEOLICA CELINE	2 Lenses Per Box	Polymacon	42%	14,2mm	8,6mm	0,07mm(-3,00)	Plano~-5,00D(-0,25step) -5,00~-10,0D(-0,50Step)
GEOLICA CIRCLE	2 Lenses Per Box	Polymacon	42%	14,2mm	8,6mm	0,07mm(-3,00)	Plano~-5,00D(-0,25step) -5,00~-10,0D(-0,50Step)



ISO
13485



CE
1023



GE^omedical[®]
CONTACTLENS INNOVATION

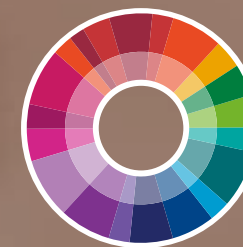
Company History

- 2011. 09 Obtained Certificate of Product Registration from FDA Philippines
- 2011. 08 Obtained TGA in Australia
- 2010. 11 Obtained Medical Device License from Health Canada
- 2010. 09 Obtained ISO 13485 CMDCAS
- 2010. 05 Obtained Accreditation Certificate of Foreign Medical Device Manufacturer in Japan
- 2010. 04 Obtained Certificate of KOTRA Seal of Excellence
(Mark of Quality, High-Technology & Trustworthiness)
- 2009. 11 Awarded for Prime Minister's outstanding export achievement
- 2009. 07 Registered patent on the automated lens mould feeding system for lathe
- 2009. 03 Awarded for outstanding export company by the Government
(Small and Medium Business Administration)
- 2008. 05 Registered patent on production method of
functional Polyurethane Hydrogel
- 2007. 01 Acquired Korea Good Manufacturers Practice (KGMP) certificate
- 2006. 07 Acquired ISO 13485 certificate and CE mark
- 2005. 09 Registered patent on manufacturing of cosmetic contact lens
- 2004. 12 Awarded Venture design award -Korea institute of design
- 2003. 03 Licensed for manufacturing medical device
- 2002. 07 The Company inaugurated

GEO Contact Lenses (M) Sdn.Bhd.
(950539-x)

Office Tel/Fax: +603-6127-2659
Mobile: +6012-2362-961
Email: geoconmy@gmail.com

Address 971-25, Wolchul-dong, Buk-gu, Gwangju, Korea
Homepage www.geo21eye.com / TEL 82-62-974-5005 / FAX 82-62-974-5006



GEOLICA[®]
COLOR CONTACT LENSES